

MAXIWASH

MWHI



Washer
Extractor

MWHI Series

MODEL : MWHI-85,
MWHI-125

MWHI Series - HARDMOUNT

The MaxiWash MWHI Series - Hardmount High Speed Industrial Strength Washer-Extractors for Medium Size On - Premises Laundry Applications, including Health Care, Hospitality, Correctional Institutions and On Board Ship Installations

Professional Performance, Built to Last, Flexible and Energy Efficiency. A Competitive and Affordable Investment Alternative



The MWHI series is designed to be an alternative to the commonly used high-speed Hardmount machines in the market. This series of machines has the cabinet and all parts in contact with the wash solution made of 304 stainless steel. The robust design ensures low cost of ownership and infrequent maintenance. Experienced engineering is used to design these strong and surprisingly affordable and reliable machines. The MWHI series has advanced features that makethese machines suitable for wet cleaning, water reuse systems and operation with ozone systems. Our combined engineering expertise, plus an outstanding warranty, assures that you will receive the best for less and products that will meet today and tomorrow's laundry needs.

Powerful Control System

The microprocessor touch screen control center is easy to use and has the features needed for maximum productivity and lowest cost of operation. The microprocessor touch screen controls the temperature, water level, speed and maintenance interval of the machine. A thermal cool down is programmable that will ensure optimal performance for any garments that require special wrinkle control and other special treatments. It can be programmed from the touch screen or with a laptop computer. The microprocessor touch screen control can be programmed to display in four languages.



It has features for programming any wash activity to meet today and tomorrow's demand for water treatment of textile fiber and garments. It is the most flexible control system yet developed for the stand-alone commercial and industrial washers in the industry and has a proven track record for reliability.

Large Robust Door with an Oversized Door Opening

Loading and unloading are fast and easy through the oversized door that opens 160 degrees away from laundry carts. The door is constructed of stainless steel and built with an oversize stainless steel hinge for extra strength and durability, and is located at a convenient height for laundry carts. This is the same heavy-duty design as used on our industrial strength high-speed freestanding washer-extractors. The door gasket is made of silicone for long life. It seals to the shell every time without leaking. A powerful and safe electro-mechanical door interlocking system is provided for safe and easy operation. Double fail-safe technology provides peace of mind for the life of the equipment.



Supply Dispenser and External Liquid Supply Connection

A 5 compartment dispenser for both liquid and powder detergents is standard. The dispenser is mounted on the left side of the machine at a convenient height for easy reach (model MWHI125). The dispenser is flushed automatically during the wash cycle. All machines are provided with five supply signals and liquid connections as standard equipment.



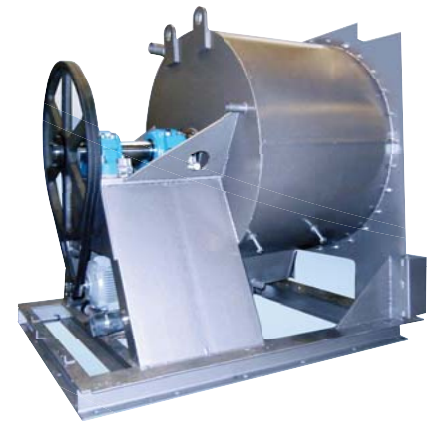
Robust Energy Efficient Drive

The machine is provided with a single totally enclosed standard motor that is controlled electronically by a variable frequency drive, which makes the machine control simple and very flexible. The inverter reduces the peak energy demand, saving energy and lowers the inrush current. It is also a watchdog for the motor, protecting against overload and over voltage. The single motor drive and inverter eliminates clutches, gear reducers and idlers, plus reduces the use of electromechanical components such as contactors and relays. It provides a powerful yet simple drive alternative that is more economical than multi-motor drives. The inverter makes it possible to achieve high extract speeds, which significantly saves energy and time in the drying process.



Solid Mount Heavy Duty Construction

Amazing strength and fewer parts give the MWHI series extra long life, without needless breakdowns. The frame is engineered to ensure for a lifetime of rigorous operation. It provides for maximum stability and durability and has a protective powder coating to reduce possible corrosion and prolongs machine life. You won't find another hardmount washer-extractor built stronger than the MWHI Series.



Power and Reliability at Work - Bearings and Seals

The machines are provided with spherical roller bearings mounted in cast steel housings. The bearings are located outside of the wash solution and will not be damaged if the seals leak. The cylinder shaft is constructed from high tensile strength steel and hard chromed for corrosion resistance. Seals are easy to access and replace. V-Belts and heavy-duty pulleys provide a safe and long lasting drive system.



SPECIFICATION

Standard Features :

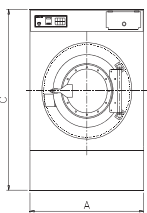
- All wetted parts are 304 (18/8) stainless steel
- 5 compartment supply dispenser
- 5 external liquid supply connections
- Advanced microprocessor
- 200 G extract force
- 3 degree lean back for strength and easy loading
- Variable frequency drive
- Stainless steel cabinet
- Single motor drive
- Cool down
- Water reuse capable

Optional Features :

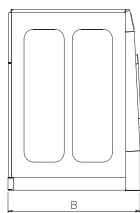
- Direct steam heating
- Electrical heating
- Water reuse drain and inlet
- EMI filter for CE
- PC programming kit
- 10 external liquid supply connections

MODEL			MWHI-85	MWHI-125
Units of Measurement	Metric	US		
Maximum Capacity	kg.	lbs.	38.6 (85)	56.7(125)
Overall Dimensions :				
A - Machine Width B	mm.	inch	1270 (50.0")	1440 (56.7")
- Machine Depth C -	mm.	inch	1520 (59.8")	1700 (66.9")
Machine Height	mm.	inch	1790 (70.5")	1820 (71.7")
Cylinder Information :				
Basket Diameter	mm.	inch	914 (36")	1067 (42")
Basket Depth	mm.	inch	610 (24")	610 (24")
Basket Volume	cu.m.	cu.ft.	0.4 (14.1)	0.54 (19)
Door Opening and Height :				
Door opening Diameter	mm.	inch	445 (17.5")	508 (20")
Height of Door Bottom Above Floor	mm.	inch	595 (23.4")	656 (25.8")
Drive Information :				
Number of Motors	Number		1	1
Size of Motor	kW	HP	5.6 (7.5)	7.5 (10)
Cylinder Speeds (Programmable) :				
Wash	RPM	G-Force	40 (0.8)	36 (0.8)
Distribution	RPM	G-Force	70 (2.5)	58 (2)
Extract 1	RPM	G-Force	260 (35)	260(40)
Extract 2	RPM	G-Force	630 (201)	580 (201)
Water Inlets and Consumption :				
Hot Water Size	NPT		1"	1"
Cold Water Size	NPT		1"	1"
Additional Water Inlet	NPT		1"	1"
Average HOT Water Consumption/Cycle	liters	gal	62 (16)	103 (27)
Average COLD Water Consumption/Cycle	liters	gal	162 (43)	226 (60)
Drain Outlets and Capacity :				
Number of Drains	Standard	Optional	1 (2)	1 (2)
Drain Size Drain	mm.	inch	76.2 (3")	76.2 (3")
Capacity	liters/min	gpm	849 (224)	1625 (425)
Steam Inlet and Consumption :				
Steam Inlet Connection	NPT		1/2"	3/4"
Steam Pressure Steam	bar	Psi	8 (125)	8 (125)
Consumption	kg/hr	lb/hr	126 (278)	169 (373)
Power of Electrical Heating :				
Electrical Power	kW		27	36
Weight and Shipping Information :				
Net weight (approx.)	kg.	lbs.	931 (2053)	1380 (3042)
Domestic Shipping Weight (approx.)	kg.	lbs.	972 (2143)	1412 (3113)

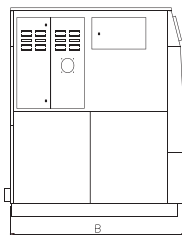
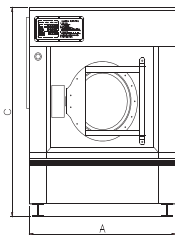
Specification of design is subject to change without notice. For additional options please consult factory and distributor.



MWHI 85



MWHI 125



4317 E. Genesee Street Suite 101 DeWitt, New York 13214
 Phone: 315 446-2180 Fax: 315-446-2431
 E-mail: sales@maxico.com

