

MTD60 MP PLUS - MTD80 MP PLUS
28 - 35 kg



FEATURES

- **Auto-reverse Drum:** the drying process is more efficient; offers better uniformity; avoiding the tangling of big pieces.
- **Frequency inverter:** controls rotating speed and reverse drum action.
- **Filter drawer** with wide surface and improved airflow made of stainless steel.
- Outer casing in **grey skin-plate**, stainless steel look.
- **Stainless Steel Drum.**
- **"MP Control"** range: easy and intuitive **electronic** control offers a complete control of the process: possibility to select required drum speed, statistics control, technical menu, alarms, etc. 10 standard programs that can be modified.
- **Soft Touch:** the stamped drum perforations make sure the liner is gently handled, lengthening the garments lifetime.
- **Total Flow:** optimized mixed axial-radial flow through further openings and back-of-the-drum air reintroduction.
- **iDRY:** humidity sensor that offers a precise humidity control; by this system the drying cycle will automatically stop when it reaches the set level of residual humidity.
- **Fire Care System.**
- **Green Flow System:** recirculation system that reintroduces the expelled hot air inside the drum.
- **Insulated Panels:** complete circuit of the air-flow has been thermally insulated (panels, double door-glass, recirculation duct).
- Big loading door (opening of 180°).
- Transmission of movement by means of pulley and Poly-V belt.
- Front support by 2 strong and high-resistant wheels.
- **Cool Down:** anti-wrinkle at the end of cycle.

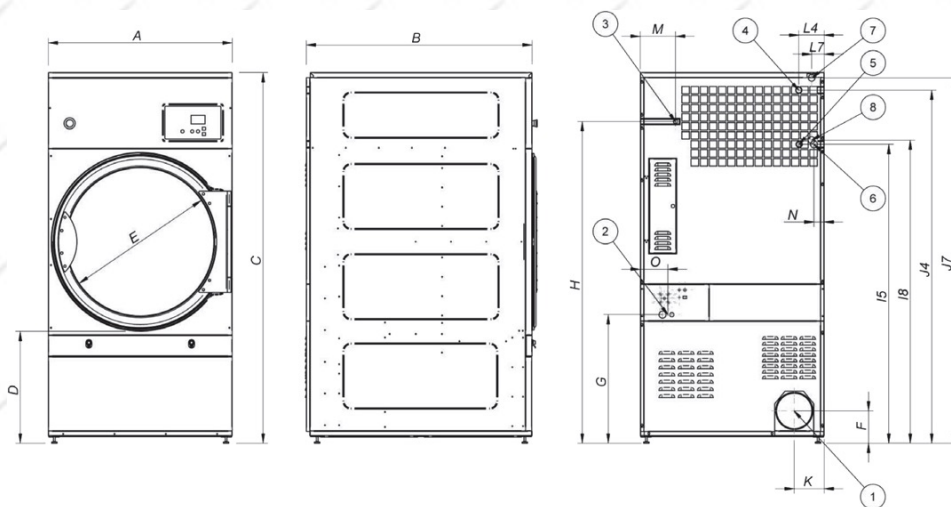
.....
Models available in electric, gas or steam heating.

OPTIONS:

- Stainless steel body.
- Stainless steel front panel.
- Low pressure steam battery.
- Model versions in 60 Hz.
- Marine versions 440V III 50/60 Hz No neutral or 480V III 50/60 Hz No neutral.

TECHNICAL DATA

TECHNICAL DATA	UNIT.	MTD-60-MP PLUS	MTD-80-MP PLUS		
CAPACITY					
Capacity	kg	27	35		
Capacity	Lbs	60	80		
Hourly Output	kg/h	72	86		
Evaporation capacity	l/h	44,6	44,6		
DRUM					
Ø Drum	mm	947	947		
Ø Door	mm	802	802		
Door center height	mm	1.040	1.040		
Load hole bottom height	mm	640	640		
Drum length	mm	780	936		
Drum volume	l	550	660		
POWER					
Drum motor power	kW	0,55	0,55		
Fan Motor Power	kW	0,75	0,75		
Total Installed power	kW	31,35	37,35		
Electric Heating (Installed power)	kW	30	36		
Gas heating (installed Power) in kW	kW	41	41		
Gas heating (installed el. power)	kW	1,35	1,35		
Steam heating (Steam Power kW)	kW	50,1	50,1		
Steam heating (installed el. power)	kW	1,35	1,35		
CONNECTIONS					
		ELECTRICAL	STEAM / GAS	ELECTRICAL	STEAM / GAS
Tension 230V - I + T	Nº x mm² / A	-	3 x 1,5 / 20A	-	3 x 1,5 / 20A
Tension 230V - III + T	Nº x mm² / A	4 x 35 / 100A	4 x 1,5 / 20A	4 x 50 / 125A	4 x 1,5 / 20A
Tension 400V - III + N + T	Nº x mm² / A	5 x 16 / 63A	5 x 1,5 / 20A	5 x 16 / 63A	5 x 1,5 / 20A
Ø Gas inlet	BSP		1/2"		1/2"
Ø Steam inlet	BSP		1"		1"
Ø Condensed (Steam models)	BSP		1"		1"
DIMENSIONS / PACKING DIMENSIONS					
Width / Width	mm	985 / 1.065		985 / 1.065	
Depth / Depth	mm	1.054 / 1.154		1.210 / 1.310	
Height / Height	mm	1.946 / 2.080		1.946 / 2.080	
Height without heating battery	mm	-		-	
Net weight / Gross weight	kg	230 / 260		260 / 285	
OTHERS					
Max airflow	m³/h	1.500		1.500	
Ø Fume exhaust	mm	200		200	
Sound level	dB	65		65	



- ① Fumes outlet
- ② Electrical connection
- ③ Gas connection
- ④ Steam connection galva battery
- ⑤ Condensation outlet galva battery
- ⑥ Anti-fire water valve
- ⑦ Steam connection stainless battery
- ⑧ Condensation outlet stainless battery

	A	B	C	D	E	F	G	H	I5	I8	J4	J7	K	L4	L7	M	N	O
MTD-60-MP PLUS	985	1.054	1.946	577	802	172	685	1.715	1.594	-	1.883	-	160	134	-	188	55	148
MTD-80-MP PLUS	985	1.210	1.946	577	802	172	685	1.715	1.594	1.616	1.883	1.948	160	134	67	188	55	690