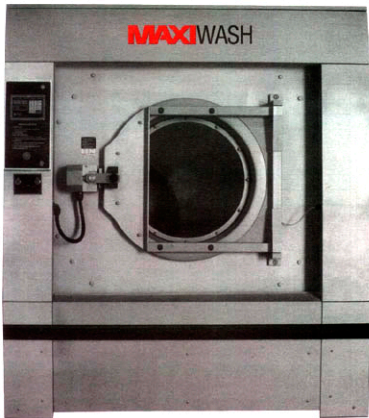


MAXI WASH



MWFS110

MWFS135

MWFS200

MWFS275

MWFS300

Washer-Extractors Engineered for

- **Performance**
- **Flexibility**
- **Quality**
- **Dependability**



Bring on your toughest customers. Nobody washes better than MAXI!

Here's what makes the new MAXI Wash models so outstanding

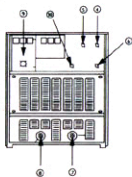
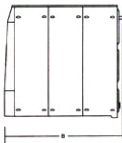
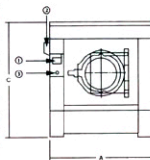
- Heavy duty frame
- Stainless steel panels
- Stainless steel basket and shell
- Stainless steel door
- Air-operated door gasket
- Double fail safe door lock
- High extract speed
- Variable programmable speed
- Large door opening
- Automatic supply injector
- Connections for liquid supplies
- Large drain valves
- Programmable water level
- Programmable water temperatures
- Programmable cool down
- Single drive motor, totally enclosed
- Bearings outside the wash solution
- Lean 3 degrees back. Less bearing load
- Heavy duty suspension springs
- Optional air cushions
- Optional tilt one or both ways
- Optional steam heating
- Some models optional electric heating

Technical Specifications	US Units	Metric Units	MWFS 110	MWFS 135	MWFS 200	MWFS 275	MWFS 300					
CAPACITY:	Lbs	kg	110	50	135	60	200	90	275	125	300	136
CYLINDER:												
Diameter	Inch	mm	37	940	43	1092	46	1169	52	1321	52	1321
Length	Inch	mm	25	635	25	635	32	813	34	864	38	965
Volume	CuFt	Liters	15.55	440	21	595	30.76	871	41.76	1182	46.74	1322
SPEEDS (Programmable)												
Wash	Rpm	r/min	39	39	36	36	35	35	33	33	33	33
Distribution	Rpm	r/min	59	59	55	55	53	53	50	50	50	50
Extract 1	Rpm	r/min	390	390	360	360	350	350	330	330	330	330
Extract 2	Rpm	r/min	515	515	480	480	465	465	435	435	435	435
Extract 3	Rpm	r/min	645	645	600	600	580	580	545	545	545	545
Extract 4	Rpm	r/min	780	780	725	725	700	700	660	660	660	660
G-FORCE MAX.	G	G	320	320	320	320	320	320	321	321	321	321
MOTOR SIZE	HP	KW	7.5	5.5	10	7.5	15	11	25	18	30	22.5
UTILITY CONNECTIONS												
Water	Inch	DN	1	25	1-1/4	32	1-1/4	32	1-1/4	32	1-1/4	32
Drain	Inch	mm	4	102	4	102	4	102	4	102	4	102
Steam	Inch	DN	3/4	20	3/4	20	1	25	1	25	1	25
Air	Inch	DN	1/4	8	3/8	10	3/8	10	3/8	10	3/8	10
DIMENSIONS:												
Width	Inch	mm	57.5	1461	64	1626	67	1702	74	1880	74	1880
Depth	Inch	mm	70.5	1791	72.5	1842	85	2159	89	2261	93	2362
Height	Inch	mm	68	1727	74.8	1900	78	1981	85	2159	85	2159
WEIGHT:												
Net	Lbs	kg	3300	1500	4300	2180	5900	2680	8500	3860	8750	3977
Shipping(Domestic)	Lbs	kg	3500	1590	5000	2270	6100	2770	8700	3950	9000	4090
Export Crated	Lbs	kg	3700	1680	5300	2405	6400	2905	9000	4085	11750	5341

Dimensions

MODEL	A		B		C		Door Opening	
	inch	mm	inch	mm	inch	mm	inch	mm
MWFS110	57.5	1461	70.5	1791	68	1727	20	508
MWFS135	64	1626	72.5	1842	74.8	1900	24.5	622
MWFS200	67	1702	85	2159	78	1981	24.5	622
MWFS275	74	1880	89	2261	85	2159	28.5	724
MWFS300	74	1880	93	2362	85	2159	28.5	724

COMPONENTS:	1. Microprocessor Controls	5. Cold Water Inlet	9. Electrical Connection
	2. Supply Dispenser	6. Steam Inlet	10. Air Inlet
	3. Control Compartment	7. Reverse Drain	
	4. Hot Water Inlet	8. Drains	



MAXI
COMPANIES
Lean Mean Laundry Machines

4317 E. Genesee St., Suite 100, Dewitt New York 13214 USA
Phone: 315 446-2180 Fax: 315 446-2403 E-mail: sales@maxico.com